

Coletto · 45' · 2 Story · 1,773 SQFT · 3 Bed / 2.5 Bath · Detached 2-Car Garage



Cape Cod



Classical Revival - Brick



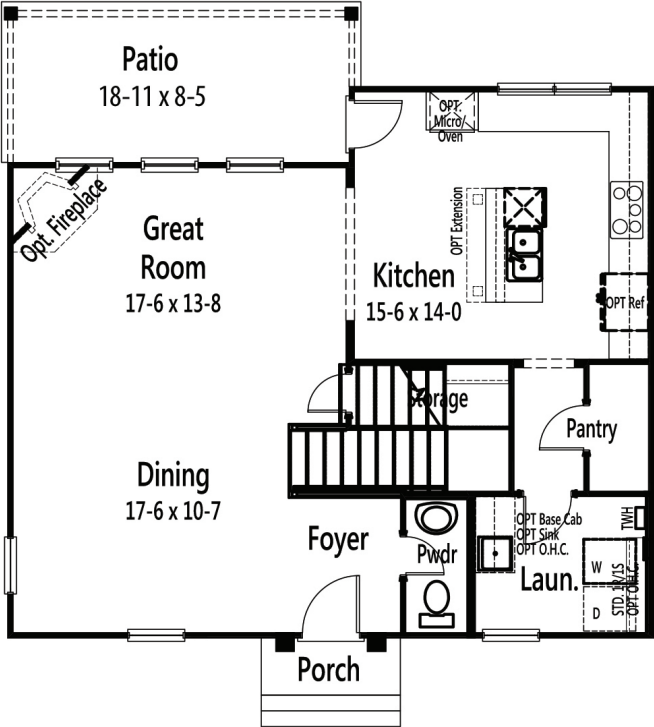
Classical Revival - Siding

*Shown with optional features; See Community Sales Manager for more details

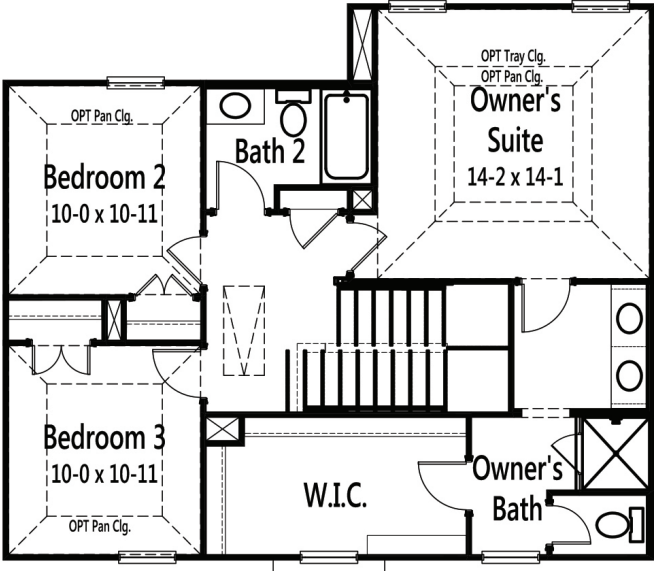
Cambridge Homes, 5601 Democracy Drive Ste. 190, Plano, Texas 75024. These depictions represent an artist's concept of the product and are not intended to be an exact representation and are not intended to show specific detailing. The company may change home design, price, materials, features and methods of construction without prior notice. Square footages are estimates only. Copyright © 2017 Cambridge Homes Holdings, LLC. All rights reserved. 9.20.17



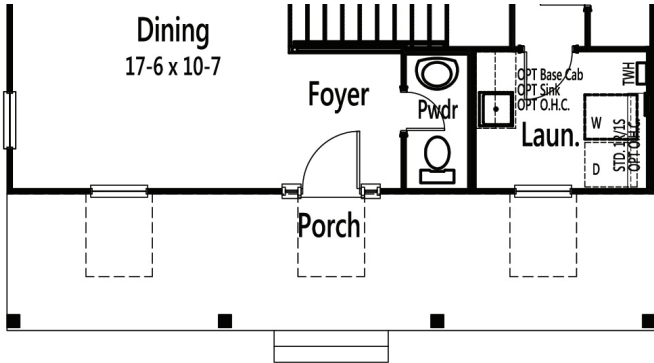
Coletto · 45' · 2 Story · 1,773 SQFT · 3 Bed / 2.5 Bath · Detached 2-Car Garage



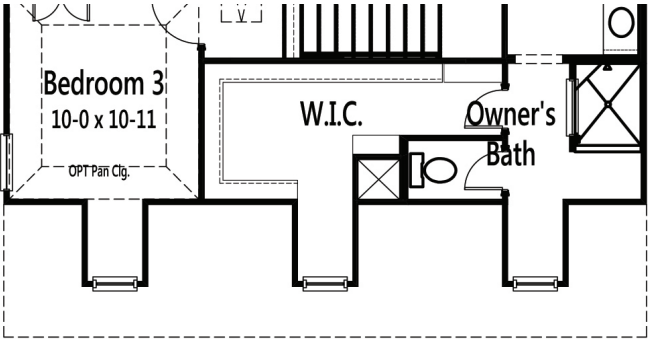
Main Floor Classical Revival w/ Siding



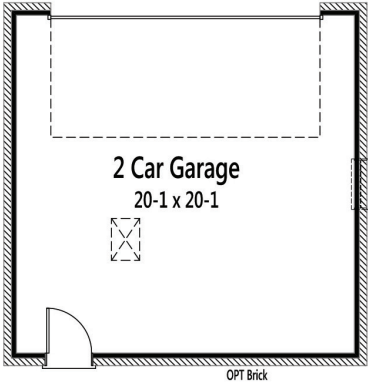
Upper Floor Classical Revival w/ Siding



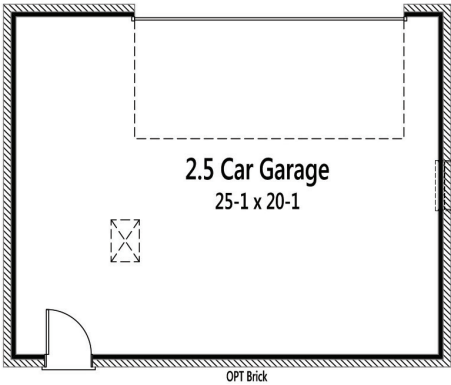
Partial Main Floor Cape Cod



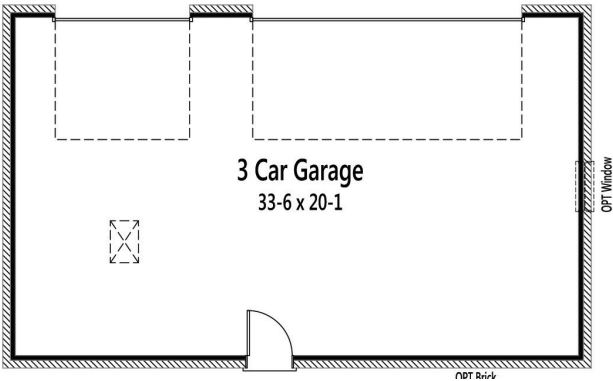
Partial Second Floor Cape Cod



Detached
2 Car Garage



Detached
2.5 Car Garage



Detached
3 Car Garage

(*Detached garage mages not to scale, see Community Sales Manager for more details)